



## ZARGES Ladders 6 to 12 rung



Product Num.	rungs		Price	Hire
41536	3x6	3m	£496	No
41538	3x8	4.1m	£590	No
41540	3x10	4.95m	£708	Yes
41542	3x12	6.1m	£857	Yes
41544	3x14	6.95m	£1080	No

**Opening time**

Monday ————— 9:00 - 5:30  
 Tuesday ————— 9:00 - 5:30  
 Wednesday ————— 9:00 - 5:30  
 Thursday ————— 9:00 - 5:30  
 Friday ————— 9:00 - 5:30  
 Saturday/Sunday ————— By Appointment

**NEW FOR 2023 COME VISIT OUR  
NEW SALES AND PROJECTS OFFICE  
IN WITNEY OXFORDSHIRE**

<p>OXFORD OFFICE Unit 2, Avenue Three, Station Lane, Witney, Oxfordshire  OX28 4BP</p>	<p>HENLEY OFFICE Unit 2 Centenary Business Park Station Road Henley-on-Thames  RG9 1DS</p>
--	--

Tel: 01491 412347

Email : Office@henleytheatre.com

Tel: 01491412347

60.

# SALES CATALOGUE

## ISSUE #2

Autumn 2022

# 01491 412347

[www.henleytheatreservices.com](http://www.henleytheatreservices.com)

3-6 ..... Introduction  
 7- 8.....Service and Testing  
 10-11.....Consumables-Lamps  
 12 .....Scrappage Scheme  
 13-15.....ETC ColorSource Family  
 16-17 .....LED Stage lanterns  
 18-19 .....LED Moving Heads  
 20 .....FollowSpots  
 21-28.....Lighting Control  
 29 .....Sound Desks  
 30-31 .....Microphones  
 32-33.....Loud Speakers  
 34 .....Communication  
 35-36 .....Video  
 37-39 .....Special Effects  
 40-41 .....Staging  
 42 .....Dance Floor  
 43 .....Drapery of the Roll  
 44 .....Fire-Proofing  
 45 .....Pyrotechnics  
 46-48 .....Staging  
 49 .....Wire Rope and Sash  
 50-51 .....Stands&Hardware  
 52.....Gaffa Tape  
 53 .....Festoon lighting  
 54-56.....Paint  
 57.....Filters  
 58 .....Gobos  
 59.....Contact the Team

# Contact the Team

## Sales

**Simon Pratley**

Sales and Purchasing

Simon@Henleytheatre.com

## Projects

**Reg Berry**

Reg@Henleytheatre.com

**Mark Wiggins**

Mark@Henleytheatre.com

## Accounts

Accounts@Henleytheatre.com

## Hire

**Joe Morris**

Hire and Events

Joe@Henleytheatre.com

**Andrew Budge**

Hire and Events estimator

Andrew@Henleytheatre.com

Operations Manager

**Nicky Johnson**

Nicky@Henleytheatre.com

### GOBOs and GOBO Holders

A, B and M Size Gobo,s available from £18.60p for all makes and models of stage lanterns, Gobos are a simple and effective way of projecting a range of interesting patterns by using a Profile Spotlight. (See page 13,14,15&28)

#### CUSTOM GOBOS

Custom Gobos are available please email your artwork to

Simon@HenleyTheatre.com please provide a PDF, Photoshop, TIFF or JPG

Standard Gobo Sizes	OD	IA	Price	Hire
A Size gobo	100mm	75mm	£18.60	Yes
B Size gobo	86mm	64.5mm	£18.60	Yes
M Size gobo	66mm	48mm	£18.60	Yes
E Size gobo	37.5mm	28mm	£18.60	No



M Size



B Size



M Size



E Size

Gobo Holders	RRP	2 or More £	Code	Hire
A Size gobo HOLDER	£25.25	£23.00	GHA	Yes
B Size gobo HOLDER	£25.25	£23.00	GHB	Yes
M Size gobo HOLDER	£25.25	£23.00	GHM	Yes
E Size gobo HOLDER	£25.25	£23.00	GHE	No

1000s of Gobos available please speak with a member of the sales team

PLEASE CALL THE SALES TEAM WITH THE MAKE AND MODEL OF YOUR LUMINAIRE .

### WHERE IT BEGAN...

Henley Theatre Services was founded in 2001

and has been servicing the performing arts and events industry ever since.

### SITE VISIT

HTS can provide a free advisory service for production and event lighting and sound solutions to amateur dramatics, schools, theatres and corporate events.

We can offer lighting and sound equipment and complete technical solutions for concerts, conference's, festivals, balls and parties.

### MUSIC FESTIVALS

Over the last few years HTS have been providing Sound, Lighting, Staging, Stage roofing and full crew for lots of Music Festivals including, Rewind Festival, Knebworth, Bunk Fest, Royal Britannia and many more.

For Site Visits and more information please contact Email -

Projects-

Reg@Henleytheatre.com

Hire and Events -

Joe@Henleytheatre.com

Maintenance & Service-

Mark@Henleytheatre.com

Sales-

Simon@Henleytheatre.com

**ALL PRICES ARE CORRECT AT TIME OF PRINT AND EXCLUDE VAT.**

## WHAT CAN WE DO...

### Hire, Production and Technical Services

HTS can provide technical equipment and services for performing arts events, festivals, corporate events and special occasions such as weddings and parties. Our extensive customer base ranges from major performance venues and production companies to schools, amateur groups, choirs, orchestras and bands.

### Projects and Installation.

HTS has a dedicated team of experts who can provide the best technical solutions for all aspects of technical theatre, including **Lighting, Sound, Drapery and Tracks, AV and Staging.**

HTS has worked in primary schools, Central London Banks, Blue chip communications companies and theatres across the country.

We can provide design & quotations for alterations or improvements to existing spaces or we can start from scratch and work alongside architects and theatre consultants as part of the design team on a new build school or theatre.



The Woodshed at The Story Museum Oxford, completed 2021



Reading Rep Theatre, completed 2021



Filters have been providing consistent colour for over 40 years, these can be used with traditional theatre lights & LED there is a huge range of filters suited for every job, The list below is a fraction of the filters available For more information and advice please call the sales team.

### Theatre filters

Colour	Code	Price
Straw	103	£7.00
Steel Blue	117	£7.00
Pale Gold	152	£7.00
Pale Salmon	153	£7.00
Bastard Amber	162	£7.00
Red Light	182	£7.00
Primary Red	106	£7.00
Moss Green	089	£7.00
Primary Green	139	£7.00
LT Blue	118	£7.00
Dark Blue	119	£7.00
Orange	105	£7.00
Yellow	101	£7.00
Mauve	126	£7.00
Chocolate	156	£7.00
Apricot	147	£7.00
Bright Pink	128	£7.00
10 pack tints and strong colours		£59.50

### Film and TV filters

Colour	Code	Price
Double CT Blue	200	£7.00
Full CT Blue	201	£7.00
Half CT Blue	202	£7.00
Full CT Orange	204	£7.00
Half CT Orange	205	£7.00
Cosmetic Peach	184	£7.00
Brushed Silk	228	£7.00
Heavy Frost	129	£7.00
White Diffusion	216	£7.00
1/4 White Diffusion	215	£7.00
Hampshire Frost	253	£7.00
Opal Frost	410	£7.00
Durham Frost	750	£7.00
Eighth CT Blue	218	£7.00

### Neutral Density

Colour	Code	Price
0.3ND Reduces Light 1 Stop	209	£7.00
0.6ND Reduces Light 2 Stops	210	£7.00
0.9ND Reduces Light 3 Stops	211	£7.00

Filter sheet size 48" x 21".

## Luminous Paint

Product Number	Description	Price
5665	Roscoglo 29.57ml	£6.40

## Chroma Key T.V. Video Paint

Product Number	Description	Price
57101	Chroma Key Blue 3.79L	£69.00
57111	Chroma Key Green 3.79L	£69.00

## Rosco Off Broadway Paint

Product Number	Description	Price
538515	Silver 0.94L	£26.80
548415	Gold 0.94L	£26.80
538615	Copper 0.94L	£26.80

## Rosco Lacquers

Product Number	Description	Price
55801	Clear Gloss 3.79L	£37.75
55811	Clear Flat 3.79L	£37.75
150068	Premiere Clear Satin 3.79L	£63.60

## HIRE AND TECHNICAL PRODUCTION

Theatre is at the core of what we do, from ambitious school productions to national tours.

As a result, we have the knowledge and experience to bring together all aspects of your technical production, making the most of budgets, and in turn making your vision a reality.

## THEATRE & TOURING

- ◆ Technical show crew (designers, engineers, project management and crew)
- ◆ Lighting design & production electrics
- ◆ Sound design, deployment & operation
- ◆ Video design, IMAG, live streaming, video capture, post-production & 3D projection mapping
- ◆ Stage & structure design, build & installation, audience tiered seating, choir tiers and gantries
- ◆ Rigging, suspended and ground support structures
- ◆ Draping, curtains & track
- ◆ Pyro & SFX
- ◆ Temporary power management, BS7909 certification



## Scenery Paints

Is a unique vinyl acrylic paint, packaged in concentrated form. It is designed to be diluted with water, at least 1:1 and more. With such tremendous extendibility, Supersaturated offers the widest range of effects possible while being extremely economical to use.

### Rosco Supersaturated Paint 1ltr Pots

Colour	Code	Price	Colour	Code	Price
Iron Red	SSIR	£20.35	Red	SSR	£29.00
Chrome Yellow	SSCY	£29.00	Green Shade Blue	SSGSB	£29.00
Yellow Ochre	SSYO	£20.35	Ultramarine Blue	SSUB	£29.00
Raw Sienna	SSRS	£29.00	Chrome Green	SSCG	£29.00
Molly Orange	SSMO	£29.00	Emerald Green	SSEG	£29.00
Burnt Umber	SSBU	£20.35	Pthalo Green	SSPG	£29.00
Raw Umber	SSRU	£20.35	Imperial Green	SSIG	£29.00
Burnt Sienna	SSBS	£20.35	Magenta	SSM	£29.00
Lemon Yellow	SSLY	£29.00	Brilliant Red	SSBR	£29.00
Turquoise Blue	SSTB	£29.00	Spectrum Red	SSSR	£29.00
Prussian Blue	SSPB	£29.00	Purple	SSP	£29.00
Navy Blue	SSNB	£29.00	Grass Green	SSGG	£29.00
Paynes Grey	SSPG	£29.00	Van Dyke Brown	SSVDB	£20.35
Leather Lake	SSLL	£29.00	White Base	SSW	£14.50
Cerulean Blue	SSCB	£29.00	Velour Black	SSVB	£14.50
Hunter Green	SSHG	£29.00			
Neutral Base	SSNB	£14.50			
Test kit 32 x 1oz Pots	SSTK	£69.35			

Amazing lighting, reliable power and crystal-clear audio are crucial to the success of any event. We deliver technical solutions and creative designs to the most exacting standards, working closely with our clients to create truly bespoke and magical experiences.

### SERVICES:

- ◆ Decorative & stage lighting
- ◆ Garden & architectural lighting
- ◆ Temporary power installation and management
- ◆ Sound systems, DJ kit, full band audio production
- ◆ Creative video and AV solutions, 3D projection mapping, live streaming & IMAG
- ◆ Stages, structures and rigging
- ◆ Draping and dressing
- ◆ Technical event crew

# Scenery Paints

Available in 9 brighter than normal colours which "glow" vividly under ultra-violet lights, Rosco Fluorescent Paints can create a wide range of exciting effects. They can be used to create special effects using ultraviolet black light or combined with other Rosco Scenic Paints to make the colors more vibrant. It is suitable for use on most surfaces after the surface has been properly prepped.

## Rosco Fluorescent Paint 473ML POTS

Product Number	Description	Price
5700	U.V. Paint Test Kit	£49.25
6200	Vivid Test Kit – 14 Colours	£49.25
578414	Blue	£18.50
578514	Invisible Blue	£18.50
578714	Gold	£18.50
578314	Green	£18.50
578114	Orange	£18.50
578614	Pink	£18.50
578014	Red	£18.50
578214	Yellow	£18.50
577314	White	£18.50



5700	U.V. Paint Test Kit
------	---------------------

## Service, Maintenance and PAT

Our dedicated TVS team Technical Venue Services can offer Maintenance and Servicing and full Test and Inspection of your performance spaces theatre lighting, engineering systems, performance and production equipment and is available as an entire package or we can tailor an inspection to suit your requirements.

Take advantage of our service contracts with discounts offered on packages over 3 to 5 years get an extra 10% for service work done during term time



### Annual inspections

HTS can provide a full service package for your venue

Description	Typical test period*
⇒ Full Electrical inspections	3 to 5 years
⇒ PAT of stage lanterns	12 Monthly
⇒ Weight test (static bars)	1 to 2 years
⇒ Weight test raise and lower bars	12 Monthly
⇒ LOLAR/PUWER inspections	12 Monthly
⇒ Fire retardency of drapes	2 Yearly
⇒ Rough focus	12 Monthly

### NEW FOR 2023

HTS can offer you a personalised customer portal and document storage. Our clients can download inspection certificates and documents.

## Focus on the show

As part of your annual service our dedicated Technical Venue Services team can offer you a pre show rig test and focus.

Bolt on technical support for focusing & technical assistance post servicing?

Be fully prepared for your next show with skilled engineers assisting with focus, programming & audio setup.



## HOUSE LIGHT EXPERTS

HTS are approved suppliers and installers of ETCs ARC System Pro A professional top of the range LED house lighting system, save money, reduce maintenance and have exceptional lighting. For more information please call the sales line and talk to the experts.



Christ Hospital School



HellCats Abingdon

## Festoon lighting

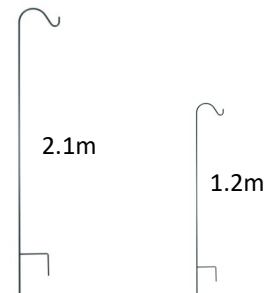
Festoon lighting boasts undeniable decoration value. From outdoor gardens to large commercial lighting arena's such as food and drink festivals, weddings, parties or even rock concerts; festoon strings combine simplicity and versatility to create the perfect ambience. CUSTOM LENGTHS AVAILABLE ON REQUEST

Description	RRP	2 or More £	Code	Hire
10m in length with 21 SOCKETS Heavy duty out door (IP44) festoon with bulb intervals every 0.5m requires BC Lamp. Max wattage per socket 15w	£78.50	£73.75	Fes0510	Yes
16a Black Plug	£3.60	£3.00	Fes1010	Yes
Pack of 5 LED 3w BC Golf ball LED lamp WW	£9.50	£7.95	PK53WBC	No
Other colours available				

Description	RRP	2 or More £	Code	Hire
Shepherds hooks 1.2m	£25.00	£22.00	SH1.2	Yes
Shepherds hook 2.4m	£35.00	£29.99	SH2.4	Yes

## Shepherds hooks

Shepherds hooks are great for stringing festoon around a garden or sports field for a fabulous outdoor lighting effect

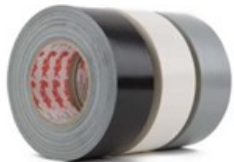




# Gaffer Tape

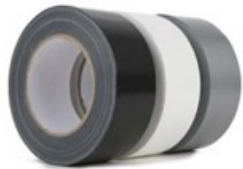
We offer a range of gaffer tape also known as duct tape, from a GP (general purpose) gloss gaffer tape IGC (industrial grade cloth tape to our most popular M (Matt range) designed specifically for stage and TV all our tapes feature a world-renowned low residue

*GP General Purpose Gaffer per 50m role*



Black	White	Silver	Box of 24
GPB	GPW	GPS	GP24
£4.15	£4.15	£4.15	£89.00

*Matt Gaffer per 50m role, perfect for TV and Stage*



Black	White	Silver	Box of 24
GMB	GMW	GMS	GM24
£6.49	£6.49	£6.49	£139.00

*High Visibility Fluorescent cloth tape 25mm wide 50m roll*



	Pink	Orange	Green	Yellow
Code	HVGP	HVGO	HVGG	HVGY
Price	£5.65	£5.65	£5.65	£5.65

PVC LX Tape 19mm x 33m available in Black, White, Red, Yellow, Green, Blue, Grey, Purple, Brown, Orange, & Yellow Green Earth.

Single Roll	10 Rolls	Box of 48
£1.10	£8.50	£37.00

## SALES

Below are just a few of our direct supply chain.



**Telephone if there is anything we can help with!**

# Common Consumables



## Electrical Tape PVC 33m rolls

Code	Description	Price
PVCB	Black 19mm x 33m	£1.10
PVCBr	Brown 19mm x 33m	£1.10
PVCBI	Blue 19mm x 33m	£1.10
PVCGY	Gr/Yell 19mm x 33m	£1.10

## Matt finish Gaffer tape 50m Rolls

Code	Description	Price
GTB	Black	£6.49
GTW	White	£6.49
GTS	Silver	£6.49

## Batteries Whole Sale price

Code	Description	Price
BAA10	10 x AA Vatra	£3.80
BAAA10	10 x AAA Vartra	£3.80
B9V	10 x PP3 9 Volt	£14.95

## Cable ties

Code	Description	Price
CT36	100 x Black 4.8mm x 360mm	£3.25

## Hook-clamp, for hanging stage lanterns onto a lighting bar

Code	Description	Price
HC	Hook Clamp 48mm with bolt set	£3.99

## Half Coupler

Code	Description	Price
GL3039	SWL - 750KG	£15.85

## Accessory Bonds (also known as safety bonds)

Code	Description	Price
AB25	SWL - 25KG x 75cm	£3.99
AB50	SWL - 50KG x 75cm	£4.99

## CANT FIND WHAT YOU WANT ?

Give the sales team a call, with over 25years in the industry we have a huge supply chain 99% sure we can find what you need.

Tel 01491 412347

## Clamps, Brackets & hardware

### Ceiling Saddle



Description	RRP	Code	Hire
Ceiling saddle	£7.74	T33700	No

### Wall Brackets



Description	RRP	Code	Hire
T84105 200mm	£29.00	T84105	No
T84106 350mm	£34.00	T84106	No
T84107 500mm	£38.00	T84107	No

### Boom arm, twisted & flat



Description	RRP	Code	Hire
Standard Boom Arm with Twist and Safety Point	£15.22	T31500	Yes
Straight Boom Arm with Safety Point	£15.22	T31600	Yes

### Hanging Clamps



Description	RRP	Code	Hire
48mm with Ring	£14.70	T32000	No
48mm with 13mm hole	£10.87	T32100	No

### 48mm universal clamps



Description	RRP	Code	Hire
48mm Universal	£8.41	T30400	Yes
48mm Universal Black	£12.05	T30404	Yes

For the FULL range visit [www.doughty-engineering.co.uk](http://www.doughty-engineering.co.uk)

## STANDS AND HARDWARE

### Speaker

Description	RRP	2 or More £	Code	Hire
Speaker Stand 25Kg Max Load	£24.00	£22.50	STAN01	Yes
K&M 21435 Speaker Stand 50Kg	£71.00	£64.00	21435	Yes
Rhino Speaker Kit: 2 stands + 1 Carry Bag	£54.00	£49.00	STAN30	No

### Microphone Stands

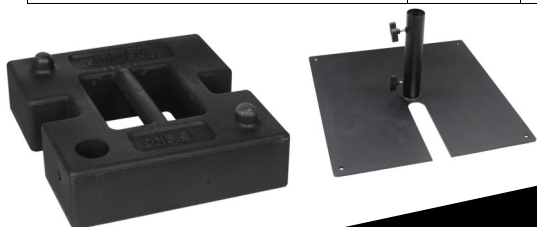
Description	RRP	2 or More £	Code	Hire
Microphone Boom Stand (budget)	£12.70	£11.20	STAN10	No
Microphone Stand kit: 2 stands, 2 6m XLR , 1 Carry Bag	£43.30	£38.75	STAN31	No
K&M 21070 Boom Stand	£49.00	£34.00	21070	Yes

### Lighting

Description	RRP	2 or More £	Code	Hire
T-Bar 1.9m wide 48mm tube	£56.25	£51.00	STAN24	No
Spigot	£36.00	£33.00	Sp	Yes
KUZAR PRIME- 80 Lightweight lifter 80KG	£262.00	£450.00	087NW	Yes

### Hardware

Description	RRP	2 or More £	Code	Hire
12.5Kg Stage Weight	£41.73	£36.90	ELUM310	Yes
Extending Scenery Brace 1-2m	£69.11	£63.00	T60000	Yes
Tank Trap	£140.00	£121.00	TankT	Yes



Name	Power	Beam Description	Price	3 or more
T25/T18	500W x 240V	N/A	£14.85	£11.90
T26/T27	650W x 240V	N/A	£14.85	£11.90
HPL575	575W x 240V	N/A	£15.25	£12.30
HPL750	750W x 240V	N/A	£15.70	£12.65
CP60	1000W	Narrow	£POA	£POA
CP61	1000W	Medium	£POA	£POA
CP62	1000W	Wide Flood	£POA	£POA
EXE	1000W	XL Wide Flood	£POA	£POA
UV Lamp	400W x 240W	N/A	£29.00	£23.20
MSD250/2	250W Discharge	N/A	£128.00	£99.00

Common Lamps fitted to common fixtures

T25 - GY9.5 - 500w fits, CCT Minuette, Selecon Acclaim, Stand Prelude, TheatreCraft 308

T26 - GY9.5 - 650w fits, Selecon Acclaim, Stand Prelude & Quartet.

HPL575 - 575w fits, ETC SourceFour Junior.

HPL750 750w fits ETC SourceFour Pro

CP 60 1000w Fits PARCAN

Please call if you need advice on your lamp base or any lantern spares such as lenses and shutters.

## STAGE LIGHTING SCRAPPAGE SCHEME

HTS is now offering a Stage Lighting Scrappage Scheme—That could save you up to £173 off any new LED Stage Lantern from the ETC ColorSource Range and the ZERO 88 FLX control consoles.

### SAVE ENERGY – SAVE MONEY

Fixtures included in the scheme....

ColorSource PAR (Fixture only)	scrappage saving	£77.00
ColorSource SPOT Engine*	Scrappage saving	£145.00
ColorSource SPOT Jnr	Scrappage saving	£103.00
ColorSource Cyc	Scrappage saving	£173.00

*Excludes lantern accessories, cables, hook clamps and safety bonds.*

Exclusively available through Henley Theatre Services you can also claim an additional 10% discount on the integration price.

#Integration price is subject to site survey and location#

Zero 88 FLXS 24 (Desk only)	Scrappage saving	£125.00
Zero 88 FLXS 48 (Desk only)	Scrappage saving	£200.00
ColorSource RELAY	Scrappage saving	£48.00

**Interested and want to know more? Call the sales team.**

\* ColorSource SPOT WILL REQUIRE A LENS see page 9 for prices.

SCHEME BASED Upon 1 x Scrapped tungsten fixture against 1 x new ECT CS range LED fixture Discounts offered again ETC UK RRP. Offer not to be used with any other 2 or more offer.

## CURTAIN TRACK ROPE



### Wire Rope

Wire rope is often used on your front of house curtain track and can also be used to suspend things from high level.

Description	RRP	Code	Hire
3mm Wire Rope 100m drum	£49.56	WR03	Yes
4mm Wire Rope 100m drum	£82.00	WR04	Yes
5mm Wire Rope 100m drum	£85.00	WR05	Yes



### Sash Chord Black

Description	RRP	Code	Hire
6mm No4 - Black 100m drum	£41.00	BS.06	No
8mm No 6 Black 100m drum	£59.00	BS.08	No
6mm No 4 - Black 50m drum	£24.00	BS.06	No
8mm No 6 Black 50m drum	£35.00	BS.08	No

Black sash is also used on your front of house curtain track and can also be used to suspend things from high level.

**For expert advice on all stage curtain tracks old or new please call our sales lines.**

# ColorSource PAR

An LED luminaire crafted by lighting experts, the ColorSource PAR uses a proportionate recipe of red, green, blue, a twist of lime and an extra dash of red to expand the ColorSource PAR's colour range, giving richness only possible from ETC LED luminaires.

This fixture is best used over the stage with a wide diffuser to offer large washes of colour and light

## Features

- PowerCon in and thru
- DMX/RDM in and thru (5-pin)
- Rugged, die-cast, all-metal housing
- Eight RGB-L colour-mixing wash luminaire

Weight – 4.8 Kg  
Standard Beam Angle – 14.5 Degrees  
(For different Beam angles add a diffuser).



Description	RRP	2 or More	Code	Hire
CSPar - Black	£775.00	£697.00	CSpar	Yes
CSPar - White	£850.00	£765.00	CSparW	Yes

Accessories	RRP	Code	Hire
Medium oval diffuser in frame	£36.00	7410K1015	Yes
Wide oval diffuser in frame	£36.00	7410K1016	Yes
Barn Door Black	£60.00	PSF1095	Yes
Barn Door White	£72.00	PSF1095-1	Yes

See page 7 to take advantage of our scrappage scheme.

For Gobos see page 58.

For hook clamps and safety chains see page 10

Product Number	Description	Length	Price
16A3	16 Amp TRS	3m	£15.52
16A5		5m	£18.10
16A10		10m	£21.00
16A20		20m	£25.00
013-6	16A 240v 3 pin Plug	N/A	£1.30
213-6	16A 240v 3 pin Socket	N/A	£2.20
16A3	16A 3 way Splitter	N/A	£8.10



## 32 Amp Cable

Product Number	Description	Length	Price
32A3	32 Amp TRS	3m	£15.52
32A5		5m	£18.10
32A10		10m	£21.00
32A20		20m	£25.00
023-6	32A 240v 3 pin Line plug	N/A	£4.70
223-6	32A 240v 3 pin Line Socket	N/A	£5.80



## 63 Amp Cable

Product Number	Description	Length	Price
63A3	63 Amp TRS	3m	£15.52
63A5		5m	£18.10
63A10		10m	£21.00
63A20		20m	£25.00
033-6	63A 240v 3pin Line Plug	N/A	£19.80
233-6	63A 240v 3 pin Line Socket	N/A	£23.80



5 pin 415v Red - POA

# ColorSource SPOT

The ColorSource Spot outperforms other four-color LED profiles, thanks to its precise combination of red, green, blue and lime emitters. This is a real beast of a fixture excellent light.

(Note – Lenses sold separately)

## Features

- PowerCon in and thru
- DMX/RDM in and thru (5-pin)
- Rugged, die-cast, all-metal housing
- Capacity to project Gobo's
- Full shuttering ability
- Exchangeable Lens barrel for different zooming ability



Weight – 10 Kg

Beam Angle – Depending on lens (Lenses sold separately)

Description	RRP	2 or More £	Code	Hire
CSSpot- Black with barrel	£1,450.00	<b>£1,305.00 each</b>	7413A1201	Yes
CSSpot- Black with out barrel	£1,410.00	<b>£1,372.50 each</b>	7413A1201-1	Yes

Accessories	Price	Code	Hire
Zoom Lens 15-30 degree Black	£535.00	7060A2030-K	Yes
Zoom lens 25-50 degree Black	£535.00	7060A2032-K	Yes
S4 50° EDLT Lens tube Black	£345.00	7460A2008	Yes
S4 36° EDLT Lens Tube, Black	£285.00	7060A2048	Yes
S4 26° EDLT Lens Tube, Black	£285.00	7060A2047	Yes
S4 19° EDLT Lens Tube, Black	£285.00	7060A2046	Yes
Fresnel Lens adapter	£540.00	7460A2016	Yes

For Gobos see page 58, For hook clamps and safety chains see page 10

See page 7 to take advantage of our scrappage scheme.

## CABLES

### Speakon Cables

Description	Price	2+	Code	Hire
5m Tour grade NL2—NL2	£24.00	£21.40	STG5	Yes
10m Tour grade NL2—NL2	£34.00	£30.50	STG10	Yes
20m Tour grade NL2—NL2	£53.80	£48.00	STG20	Yes

### XLR Microphone Cable

Description	Price	2+	Code	Hire
1m - 3pin M-F XLR	£12.00	£9.60	1MXLR	Yes
2m - 3pin M-F XLR	£12.68	£10.15	2MXLR	Yes
5m - 3pin M-F XLR	£13.75	£11.20	5MXLR	Yes
10m - 3pin M-F XLR	£18.65	£14.90	10MXLR	Yes
20m - 3pin M-F XLR	£26.35	£21.40	20MXLR	Yes

### XLR Adaptors.

Description	Price	2+	Code	Hire
3 Pin Male to Male	£24.00	£21.40	3PMM	Yes
3 Pin Female to female	£24.00	£21.40	3PFF	Yes
5 Pin Male to Male	£23.80	£21.40	5PMM	Yes
5 Pin Female to Female	£23.80	£21.40	5PFF	No
DMX Terminator	£5.00	£4.42	DMXT	No
NL4MMX Speakon Coupler	£6.50	£4.50	NL4MM	Yes

**Lighting control cable DMX**

# Cable

All our, pre-manufactured cables are manufactured to the highest standards using four grade industry standard Nuetrrik connectors, each cable CAN be labelled with type and length on both ends, cables are

**DMX Cables – 5 Pin**

Description	RRP	2 or More £	Code	Hire
1.5m XLR5m to XLR5F	£19.00	£16.70	DMX2M	yes
3m XLR5m to XLR5F	£20.00	£17.80	DMX3M	yes
5m XLR5m to XLR5F	£22.00	£18.90	DMX5M	yes
10m XLR5m to XLR5F	£33.00	£28.50	DMX10M	yes
20m XLR5m to XLR5F	£44.00	£37.60	DMX20M	yes



**Hybrid 5 Pin XLR-Powercon Combi Cable**

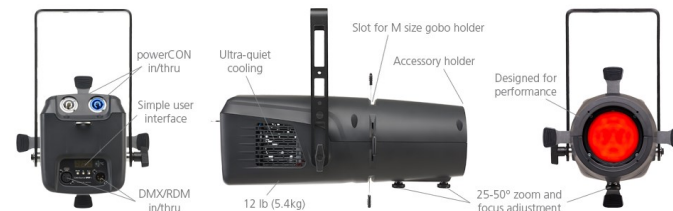
**(Lighting)**

Description	RRP	2 or More £	Code	Hire
1.5m XLR - Powercon	£54.33	£46.60	HB1.5M	yes
3m XLR - Powercon	£58.00	£49.70	HB3M	yes
5m XLR - Powercon	£67.00	£57.00	HB5M	yes
10m XLR - Powercon	£85.00	£71.00	HB10M	yes
20m XLR - Powercon	£98.00	£89.00	HB20M	yes

Image shows 3pXLR –UK industry standard DMX will be 5PXLR

# ColorSource Spot Jr & Cyc

ColorSource Spot jr gives you more of what you love at a fraction of the cost AND a fraction of the size. This fixture uses the same colour technology as other ETC fixtures including droop compensation, extensive third-party lifetime testing, and comprehensive factory colour calibration.



**Features**

- PowerCON in and thru

Description	RRP	2 or More £	Code	Hire
CS Spot Jr	£1,030.00	£927.00 each	7416A1201	Yes
Accessory Kit	£62.00	£55.00 each	7416K1001	Yes

ColorSource Spot jr accessory kit (pattern/gobo holder, soft focus diffuser, accessory holder, media/gel frame)

Description	RRP	2 or More £	Code	Hire
CSCYC- Black	£1,730.00	£1,557.00 each	7415A1200	Yes
CSCYC- White	£1,805.00	£1,624.50 each	7415A1200-1	Yes



ETC offer a 5-year warranty on the entire fixture, and an astonishing 10-year warranty on the LED array.

For Gobos see page 58.

For hook clamps and safety chains see page 10

# Strand lighting

With over 50 years manufacturing experience Stand lighting is a tried and trusted well known name in the industry

## ACCLAIM LED PROFILE

This LED zoomspot luminaire offers high output and full color mixing in a single, precision key lighting and gobo projection. With a built-in manual zoom and focus and a four-blade manual shutter system, the perfect choice for small to medium-sized schools, and theatres.



## ACCLAIM LED CYC

A breakthrough in cyclorama lighting the ACCLAIM LED CYC luminaire delivers smooth even cyclorama lighting in a compact lightweight design.



## ACCLAIM LED FRES-

The Strand Acclaim LED Fresnel is a full color theatrical Fresnel wash fixture designed specifically for small to medium spaces.



Description	RRP	2 or More £	Code	Hire
Acclaim LED Zoom spot	£1,228.00	£ 1,105.00	AZS 001	Yes
Acclaim LED B-size gobo holder	£22.75	£19.99	GH	Yes
Acclaim Fresnel	£1,059.00	£ 953.10	AF	Yes
Barn door	£98.00	£78.40	AFBD	No
Acclaim LED CYC	£1,771.00	£ 1,593.70	AC	Yes

For Gobos see page 58.

For hook clamps and safety chains see page 10

# Pyrotechnics

*“Pyrotechnics, smoke, haze, flames, snow, confetti, streamers and more, we manufacture over 1,500 state-of-the-art products all here in the UK.” - Le Maitre*

Product Number	Description	Price
PLM1111	Pro Stage 2-way Detonator	£195.00
PLM1112	Pro Stage 6-way Detonator	£249.00
PLM1114	2 & 6 way Power Supply Unit	£27.00
PLM1102	Flash Pod	£64.00
PLM1121	Twin Pod	£84.00
PLM1103	Variable Angle Pod	£76.00
PLM1122	Splitter Box	£78.00
PLM1700	Cardboard Wad for Confetti Cannon	£2.00
PLM1123	5m Pyro Lead	£44.00
PLM1115	10m Pyro Lead	£50.00
PLM1116	25m Pyro Lead	£64.00
PLM2022	3 pin Bulgin Chassis Socket (female)	£6.20
PLM2023	3 pin Bulgin Male Plug	£8.20
1200	Theatre Flash Medium (Box of 12)	£47.00
1200R / 1200G	Theatre Flash Red or Green (Box of 12)	£50.00
1201	Sliver Star Medium (Box of 12)	£48.00
1228	Silver Jet (Box of 12)	£68.00
1231	Mini Gerb Silver 7 Seconds (Box of 12)	£92.00
1253	Streamer Cartridge Small (Box of 12)	£106.00
1224	Theatrical Maroon medium (Box of 12)	£68.00





# Fireproofing

## Fire Check Fire Proofing Liquid

MSL Firecheck is a flame retardant spray that will treat anything that will absorb water. Simply apply a fine mist to all exposed surface areas of the article requiring treatment.

- Quick & easy to apply
- 1 litre covers 10m2
- Invisible finish with no sheen



Code	Product	Description	Price
FIR001	Fire Check Hand Spray Bottle	75cl	£10.00
FIR002	Refill Container	5L	£50.00

## Foamcoat

FoamCoat is a non-toxic, water-based coating for styrofoam and polystyrene foam, as well as other surfaces. It provides a hard, durable finish that resists chip-



Product Number	Description	Price
60710017	Foamcoat 3.79Ltr	£63.50
60400517	Tough prime White 3.79Ltr	£62.50
605517	Tough prime Black 3.79Ltr	£62.50
60712017	Flex Coat 3.79Ltr	£57.00
60750017	Flex bond 3.79Ltr	£48.50

## BUDGET LED



The Artisan 1200 RGBAL **Profile** is ideal for schools, churches and stages and makes an ideal replacement for tungsten fixtures. 12° to 25° degree beam angle.



The Artisan 2000 RGBWA **Fresnel** is ideal for schools, churches and stages and makes an ideal replacement for tungsten fixtures 20° to 50° degree beam angle.



The CYC600 from eLumen8 is a powerful, quad-colour cyclorama wash suitable for theatre, studio or stage lighting. With an asymmetric beam angle 90 x 113



150W Warm White COB pars use COB LEDs to produce a high output wash featuring an 80° beam angle standard, supplied with three beam reduction lenses (25°, 40° and 50°)



LEDJ Alu Quad PAR64 MKII RGBW a super bright affordable LED Parcan with 22° degree beam, optional barn doors.

Description	RRP	2 or More £	Code	Hire
Artisan 1200 RGBAL Profile	£448.00	£403.50	ledj331	No
Artisan 2000 RGBWA Fresnel	£350.00	£315.00	ledj333	No
CYC 600 Cyc Light	£465.00	£419.25	Elum122	No
150W COB	£215.00	£193.50	LEDJ375	No
LEDJ Quad PAR64 MKII	£220.00	£198.00	ELUM115	No

For Gobos see page 58.

For hook clamps and safety chains see page 10

## Moving heads



**Chauvet Rogue R1 Wash** Rogue R1 Wash distinguishes itself by offering a combination of performance features unique to its price class. Powered by seven RGBW 15 W quad-LEDs, this bright and versatile moving wash zoom fixture features a unique "bubble" lens design for excellent color rendering and stunning visual effects. 11° to 48° zoom angle  
5.9kg Dimensions 187 x 265 x 354mm



**Chauvet Rogue R2X Wash** is a valuable addition to rental and production inventories. Durable and dependable, this moving wash workhorse produces a bright, powerful light and offers five zones of LED control to pixel map its 19 (25 W) RGBW quad-LEDs. A standout zoom range of 7.3° to 64.3°  
10.3kg Dimensions 218 x 306 x 398mm



**Chauvet - Rogue R1X Spot** brings innovation and creativity with a rotating 3-facet prism for stunning aerial effects, a motorized iris and focus for beam shaping, as well as two gobo wheels, one of which rotates and has 7 interchangeable gobos for custom looks. Rogue R1X Spot shines brightly with a 170 W LED light source in a 14° beam angle for crisp gobo projections in a range of eight beautiful colors. 17.1kg Dimensions 282 x 360 x 447mm



**Chauvet - Rogue R2X Spot** offers incredible value with a stunning range of colors and effects, all supported by professional quality engineering. Rogue R2X Spot builds on the features of the [R1X Spot](#) by adding gobo-morphing technology and two variable scrolling color wheels for an unlimited number of shape-changing and split-color effects. Rogue R2X Spot uses a powerful 300 W LED light source in a 16.5° beam angle 21.5kg Dimensions 409 x 343 x 489mm



**Chauvet Rogue R1 BeamWash** is a versatile and compact moving head that projects a punchy beam and wash. Weighing just under 12 lbs., the unit features a custom-designed optical system with seven, 40W RGBW LEDs and an expansive zoom range of 3.4° to 67.7° 5.35 kg Dimensions 214

Description	RRP	2 or More £	Code	Hire
Chauvet Rogue R1X Wash	£1060.00	£848.00	R1XW	No
Chauvet Rogue R2X Wash	£1,860.00	£1,488.50	R2XW	No
Chauvet Rogue R1X SPOT	£1,490.00	£1,192.00	R2XS	No
Chauvet Rogue R2X SPOT	£2,250.00	£1,800.00	R1XS	No
Chauvet Rogue 1 Beam/Wash	£1,620.00	£1,296.00	R1BW	No

For hook clamps and safety chains see page 10

## Draperies and materials off the roll.

Black Bolton Twill, otherwise known as BBT, this is probably the most commonly used material in theatre, and is available per metre or manufactured into bespoke drapes of any size, black wool serge is a dense heavy duty black material. Canvas is a heavy duty off white material and Calico is a light weight material again off white and is often used to paint backdrops. All materials can be made to order and bespoke front of house drapes available on a quotation basis. All materials are fire retardant to DFR/NDFR/IFR



Material	Length	Price
Black Bolton Twill 48" Width	Per Linear Metre	£4.85
Scenic Canvas 70" Width	Per Linear Metre	£7.95
Cotton Calico 72" Width	Per Linear Metre	£4.00
Shark tooth Gauze 31ft Width Available in Black, White, & Grey	Per Linear Metre	£62.00
Black Casement 55" Width	Per Linear Metre	£2.85
Black Wool Serge 60" Width	Per Linear Metre	£12.95

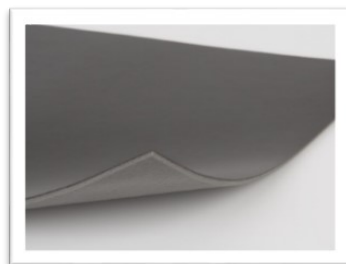
All of the above materials are available in wider widths, canvas available bleached or natural. If you have any question regarding drapery please call the sales office.

## Dance Floor

Harmony is an outstanding multi-purpose dance floor without the big price tag. Harmony™ Value's lightweight construction and inner mineral fibre Insert allows it to lay flat almost instantly from the roll and is ideal for both permanent and touring Installations.



Length (M)	Black	White	Grey
10	£215.00	£215.00	£215.00
15	£320.00	£320.00	£320.00
20	£425.00	£425.00	£425.00
25	£533.50	£533.50	£533.50



## Dance Floor Tape

2" Matt PVC

Black	White	Clear	Box of 24
PVC2B	PVC2W	PVC2C	PVC24
£3.50	£3.50	£3.50	£68.00



## Moving heads



**Fusion 120 MK II** is a 80W LED Zoomable moving head with RGBW. Super fast and smooth action, giving soft edge circle of light 6° to 45° degree beam angle. 4Kg Dimensions 300 x 198 x 146mm



**Fusion 140** is a 130W LED Moving Head with RGBWAUV. Super fast and smooth action, giving soft edge circle of light 35° degree beam angle. 4.5KG Dimensions 310 x 262 x 155mm.



**Fusion 200 Zoom Spot** is a super bright 200W LED Moving Head with a 11° to 25° Zoom, Super fast and smooth action, giving hard edged circles of light with 7 gobos and 7 colours. 12.5Kg Dimensions 450 x 302 x 200mm

Description	RRP	2 or More £	Code	Hire
Equinox Fusion 120	£245.00	<b>£220.00</b>	EQLED068	No
Equinox Fusion 140	£216.50	<b>£194.00</b>	EQLED074	No
Fusion 200 Zoom Spot	£525.00	<b>£469.00</b>	EQLED054	No

For hook clamps and safety chains see page 10

## Follow Spots

### LDR ASTRO 250w Plus

Astro 250W LED 3500k Follow spot Supplied with Iris, Mains Cable and Integral Ballast. Super bright perfect for most school halls. DMX in & Out

Features...

Beam shaping 20 leaf iris (included)

Optical Dimmer Iris (included)

Multiple option colour frame (included)



Description	RRP	2 or More £	Code	Hire
ASTRO 250w LED	£2,520.00	£2,250.00	ASTRO 250w	Yes
ASTRO STAND	£210.00	£189.00	Stand	Yes
Colour changer	£175.00	£132.00	CC	Yes
28mm Spigot	£5.00	£4.40	SP	Yes
Clamp on Manual dimmer	£168.00	£127.00	COD	Yes

### LEDJ FS300 Follow spot

LED Follow spot FS300 is a portable, LED follow spot that emits a tight beam powered by a bright 300 W LED.

Built-in colour changer 5600k colour temperature 12° to 24°. (Very cold) 1 dmx CHANNEL



Description	RRP	2 or More £	Code	Hire
LED Followspot FS300	£770.00	£687.00	FS300	No
Stand	£162.50	£144.00	fs300st	No

## SpeedDeck

### RATstands Staging



SpeedDeck makes building your performance area even easier with stronger platforms, lighter materials and with all the flexibility expected from the easiest and fastest staging system

on the market. Platforms are easy to manoeuvre and operate, which rapidly reduces the time spent on setting up.

Description	RRP	2 or More £	Code	Hire
2m x 1m Deck black hex board top.	£594.00	£564.30	140Q02	Yes
1m x 1m Deck black hex board top	£406.00	£345.100	140Q01	Yes
1m Hand Rail Inc. chair stop and Left & Right socket	£125.00	£110.00	141Q1-1000	Yes
2m Hand Rail Inc. Chair stop Left & Right Socket	£222.00	£202.00	141Q1-2000	Yes
Intermediate socket for handrail	£150.00	£135.00	141Q29	Yes
Corner socket for hand rail	£174.00	£156.00	141Q28	Yes
Edge Socket Left & Right Please state	£106.00	£95.40	141Q26 (LH) 141Q27 (RH)	Yes
Single tread staircase	£902.00	£810.00	109Q21	Yes
Two tread staircase	£1245.00	£1,120.50	109Q22	Yes
Three tread staircase	£1265.00	£1138.50	109Q23	Yes
600mm hand rail for stairs	£282.00	£253.80	141Q-600	Yes
900mm hand rail for stairs	£298.00	£268.00	141Q-900	Yes
Set of 4 x casters—Max 15platforms	£276.00	£248.40	107q12x4	Yes

Due to size and weight, shipping fees will be quoted at time of order .

## Lightweight Debut Staging



Debut stage systems are super lightweight, very easy to handle and compact to store.

No single component weighs more than 7Kg, Debut is a popular choice for use in schools, churches, village halls and the like. It can be erected by a single person or people that don't usually lift heavy items.

<b>BASES &amp; TOPS</b>	<b>RRP</b>	<b>Code</b>	<b>Hire</b>
750mm x 750mm @ 170mm high base	£59.75	DSB170	No
750mm x 750mm @ 340mm high base	£60.75	DSB340	No
750mm x 750mm @ 510mm high base	£68.75	DSB510	No
750mm Safe-Grip Silhouette Top	£43.75	DSTOP	No
<b>STEPS</b>	<b>RRP</b>	<b>Code</b>	<b>Hire</b>
340mm height Step unit	£169.75	DSHSU340	No
510mm height step unit	£179.75	DSSU510	No
<b>LINKERS</b>	<b>RRP</b>	<b>Code</b>	<b>Hire</b>
Single spacer	£0.99	DSSSL	No
Duo Linker	£1.95	DSDL	No
Trio Linker	£2.50	DSTL	No
Quartet Linker	£2.95	DSQL	No
<b>STORAGE OPTIONS</b>	<b>RRP</b>	<b>Code</b>	<b>Hire</b>
Guard Rail With Chair Stop	£70.75	DSGRCS	No
Chair Stop Rail	£21.75	DSCSR	No
Storage truck for frames	£159.75	DSST	No
Storage truck for guard rail	£159.75	GRST	No

## The Ion® Xe

Small console. Mighty control.

The Ion® Xe is the compact workhorse of the Eos® family. Featuring the same backlit keyboard layout and full-feature software as its bigger siblings, this little desk brings professional programming power to any venue.



Ion Xe Lighting desk



Ion Xe20 Lighting desk

<b>Description</b>	<b>RRP</b>	<b>2 or More £</b>	<b>Code</b>	<b>Hire</b>
Ion Xe Lighting desk	£POA	£POA	43311A1011-EU	Yes
Ion Xe20 Lighting desk	£POA	£POA	43311A1021-EU	Yes

Flightcases & Pelican cases available on request.

We can provide free in house training or chargeable on site training.



# ETCnomad

## Education Package

Are you a student or educator? Do you want your own professional yet affordable control system?

We have just the answer for you: the ETCnomad Education Package. It's an ideal foundation for students interested in lighting control.



Description	RRP	2 or More £	Code	Hire
ETC Nomad Student Edition	£235.00	£235.00	4267A1004	no
ETC Nomad Base Key	£170.00	£170.00	*****	no

**NOTE:** The student discount offer is only available to individuals currently in education or undergoing an apprenticeship or internship - 1 x per customer.

Student package includes

1 x 512 ETC Nomad lighting controller key and a gadget 2 DMX universe USB to XLR interface.

### UNIQUE 2.1

The haze machine UNIQUE 2.1 offers - among the features that already characterised the Unique 2 - an even more silent working. The sound could be absorbed tremendously. Thus, the machine can be used in fields of operation where any sound is undesirable.



With its variable output - whereas the haze density and also the output can be varied - the machine can be used in many fields: Any desired effect - from the finest mist to a thick haze, similar to fog - can be achieved.

Therefore the machine is able to fill small and big rooms or halls with a constant haze, creating the right atmosphere and excellently supporting lighting effects.

#### Features...

- Minimal warm up time
- Minimal noise
- Variable output
- Minimal fluid consumption

Description	RRP	2 or More £	Code	Hire
UNIQUE 2.1	£961.00	£899.00	LO0370	yes

## Fog Machines

### Jem ZR25/45

The JEM Series are high-end fog machines designed to deliver superior and uninterrupted performance in demanding professional applications.



Description	RRP	2 or More £	Code	Hire
Jem ZR25	£905.00	£724.00	MAR1163	Yes
Jem ZR45	£1,349.00	£1,080.00	MAR1165	No

### Fluids

Description	code	Size (L)	Price
Le Maitre Haze Fluid (Nutron/MVS)	2948	2.5L	£48.75
Look Solutions Unique Haze	Loo151	2L	£28.00
Look Solutions Unique Haze	Loo151	10L	£95.00
Martin Rush Haze	MAR1275	5L	£24.75

Description	code	Size (L)	Price
Martin-Rush Fog Fluid	MAR1271	5L	£29.75
Martin-Jem Pro Fog Fluid	MAR1708	5L	£29.75
Showtec Low fog fluid	60647	5L	£18.00

## Titan One

Fast and Intuitive control of intelligent lighting, Dimmers and LED effects from one on screen console. Titan One DMX USB Dongle allows the user to output one line of DMX with the full functionality of Avolites Titan Software. Access powerful features such as Pixel mapper, Quick sketch, Media Clip Select, Attribute Control-Blades and Shape Generator. Titan One allows you unlimited usage which gives you uninterrupted programming and playback time.



Description	RRP	2 or More £	Code	Hire
Titan one	£300	£215.00	Titan1	Yes

Peli cases available



Training,

We can provide free in house training.



# FLX S24 Single Universe 512

Ultimate portability, offering a powerful LED and moving light controller in a small 19" unit with direct access to each of the lights in your rig.

## Features

- Control up to 48 LED, moving lights and Generics - 24 multi-function faders
- 49 playbacks (each with submaster & full cuestack functionality)
- 48 groups, 4 x 48 palettes (Colour, Beamshape, Position, Effect)
- 19" rackmount able (6 rack units high)



Description	RRP	2 or More £	Code	Hire
FLX S24	£1,249.00	£1,124.00	0020-000022-00	Yes

Training...

We can provide free in house training or chargeable on site training.



# Avalanche Snow Machine

Designed for large events, the Avalanche from Equinox utilises a large, high output fan to project the snow flakes up to

10 metres into the air.



Description	RRP	2 or More £	Code	Hire
Avalanche Snow machine with flight case	£974.00	£868.00	EQLED358	No
5L Fluid	£16.50	Box of 4 £44.00	FLUI03	No

## Snow Machine

QTX 1200W Snow machine with wired remote control and DMX control.



Description	RRP	2 or More £	Code	Hire
Snow machine 1200w DMX	£145.00	£120.99	G002FW	Yes
5L Fluid	£16.50	Box of 4 £44.00	FLUI03	no

## Bubble Machine

ADJ Bubble Tron XL Bubble machine



Description	RRP	2 or More £	Code	Hire
ADJ BubbleTron	£115.00	£99.99	1411100022	Yes
5L Fluid	£11.00	£9.90	1422200001	no

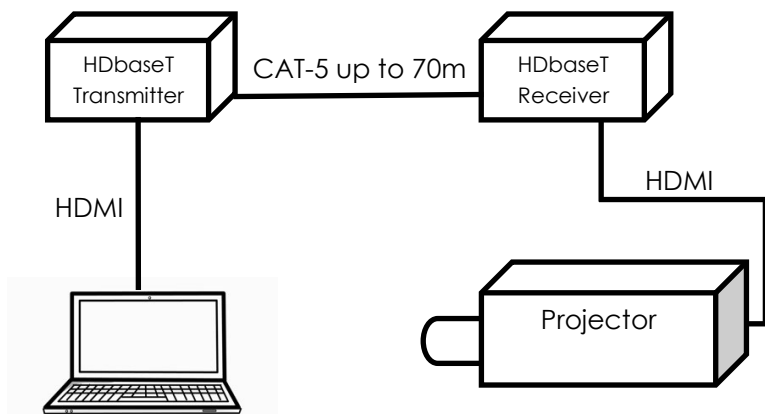


## Plug & Play AV

The SY-HDBT-70-SLIM-SET is a cost-effective 4K to HDBaseT extender set, capable of transmitting up to 70m @ 1080p or 40m @ 4K. The HDBT-131EC has a single HDMI input, 3x HDBaseT outputs, and an additional local HDMI output, with the ability to de-embed the audio on a balanced analogue output. It comes supplied with 3 EC receivers, PoC and bi-directional IR.

A cost-effective VIDEO distribution platform

Description	RRP	2 or More £	Code	Hire
SY-HDBT-70-SLIM-SET	£282.00	£248.00	HDBT70	Yes
SY-HDBT-100-SLIM-SET	£435.00	£382.00	HDBT100	Yes
70m CAT 5 E Cable	£114.00	£105.00	CAT570	Yes



Bespoke system arrangements available on request? Speak to our projects team for permanent installation options.

36.

Tel: 01491412347

## FLX S48 single Universe -512

Double the power with intuitive and hands-on control of up to 96 fixtures, and a touch monitor output to provide quick access to palettes and an overview of the show.

### Features

- Control up to 96 LED, moving lights and Generics
- 48 multi-function faders
- 97 playbacks (each with submaster & full cue stack functionality)
- 96 groups, 4 x 96 palettes (Colour, Beam shape, Position, Effect)
- DVI-D output for optional external touch screen (1024 x 768)



Description	RRP	2 or More £	Code	Hire
FLX S48	£1,999.00	£1,799.00	0020-000024-00	Yes

Training...

We can provide free in house training or chargeable on site training.



25.

Tel: 01491412347

# ZERO 88 FLX

The most powerful in the range with intuitive and hands-on control a touch screen monitor output to provide quick access to palettes and an overview of the show.

## Features

Control up to 2048 channels

24 multi-function faders  
241 playbacks

Built in 7inch touch screen

DVI-D output for optional external touch screen (1024 x 768)



Description	RRP	2 or More £	Code	Hire
FLX	£3,499.00	£2,999.00	0020-000024-00	Yes

Training...

We can provide free in house training or chargeable on site training.



26.

Tel: 01491412347

# Video

## Vivitek-DU7098Z Projector (suitable for a large school hall)

7000 Lumens Laser Light source.

2 x HDMI, HD15, RGBHV, HDBaseT, Svideo, Video, LAN, RS232, Corner Keystone, Curved Correction, 360 degree, Lens Shift, Dicom, Edge Blending, Speaker.



*Vivitek-DU7098Z* is a fantastic super bright projector with interchangeable lenses.

Description	RRP	2 or More £	Code	Hire
Vivitek -DU7098Z (No lens)	£6,190.00	£5,624.00	DU7098Z	Yes
Standard throw lens	£320.00	£299.00	5811120865-svv	
Universal telescopic ceiling mount 600-1000 mm, Grey	£262.00	£210.57	UTS6-1	No

## Projector Lenses

Description	RRP	2 or More £	Code	Hire
Short throw 0.80:1	£POA	£POA	<b>DU7098ZST</b>	No
Long Zoom	£POA	£POA	<b>DU7098ZLZ</b>	No
Ultra Long Zoom	£POA	£POA	<b>DU7098ZULZ</b>	No

Many other projectors available on request,

HTS are expert installers and integrators of bespoke system arrangements.

Speak to our projects team for permanent installation options.

35.

Tel: 01491412347

## Communications

*tecpro*  
by Canford



As with all things communication is crucial theatre is no different below we have offered 2 x options the first option is a traditional wired system which could be part of wired installation or operate as stand system using trailing leads, the system requires a wired belt pack and headset.

### Tecpro WIRED communications system.

£132Description	RRP	2 or More £	Code	Hire
Tecpro Master Station	£867.00	£780.00	MS745	Yes
Tecpro PSU	£282.00	£53.00	PS751	Yes
Belt Pack Single circuit	£201.00	£180.90	BP511	Yes
Headset Single Muff	£132.00	£118.50	SMH210	Yes
Cable 10m	£25.00	£19.00	4pXLR10	Yes

The below is the latest wireless system, this system is limited to 5 belt packs and headsets. Larger systems are available POA

### Clear-Com wireless system

Description	RRP	2 or More £	Code	Hire
Clear-Com Master station . <b>Max 5 belt packs</b>	£9,290.00	£8,800.00	Base II-5	No
Clear-Com FSII Antenna	£2249.00	£2001.00	TCVR-24	No
Belt Pack	£2,249.00	2136.00	BP24	No
Headset single muff	£300.00	£285.00	28 -X4	No
5 way FreeSpeech II Batt charger .	£763.00	£724.00	AC60	No
Battery	£86.00	£81.70	BAT60	No

## DMX Products

**DMX** is industry standard lighting control protocol, a single universe of DMX can control up to 512 channels.

DMX is essential when using LED, If you would like more information about adding a DMX infrastructure to your existing stage lighting system please call the team.

### DMX Splitters

Description	Price	2+	Code	Hire
Transcension CS2 -2 way	£46.50	£41.00	BOTE72	No
Transcension RS6 -6 way 19"	£109.00	£99.75	BOTE63	Yes
Acme CAM26 Merge/Splitter	£219.00	£199.50	CONT20	No

### Wireless DMX + Adapters

Description	Price	2+	Code	Hire
WIRELESS SOLUTIONS F-1 G6	£859.00	£799.00	CONT40	No
5 pin M - 5 pin F Lead Adapter	£12.00	£9.55	5M3F	Yes
5 pin F - 3 pin M Lead Adapter	£12.00	£9.55	5F3M	Yes

### DMX Leads

Description	Price	2+	Code	Hire
5 pin 2M Lead	£20.00	£18.00	5p2m	Yes
5 pin 5M Lead	£22.00	£19.55	5p5m	Yes
5 pin 10M Lead	£25.00	£21.55	5p10m	Yes
5 pin 20M Lead	£27.50	£23.00	5p20m	Yes

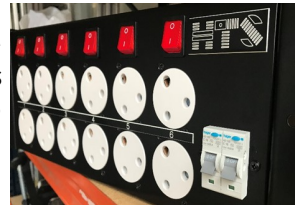
## Betapack 4

Betapack 4 builds on this heritage by distributing both dimming and 'hot power' (power straight from the MCB, bypassing all control circuitry) to a mixed rig of both tungsten and LED fixtures in a single, affordable device. Betapack 4 continues to serve the most modern applications in lighting rental, installation and portable situations for many thousands of venues worldwide.



## HTS Switch Pack

The HTS15s is a dedicated switch pack designed for introducing LED lighting into a traditional stage lighting systems that uses a cord patch panel. This wall or rack mountable unit contains 12 x 15amp socket outlets making 6 x pairs of two.



## Alpha pack 3

Alphapack 3 is a three channel portable dimmer unit, which can be safely secured to a vertical or horizontal bar by adding a standard clamp onto one of two new m10 mounting positions, or attached to a wall with the use of an additional mounting bracket (sold separately).



Description	RRP	2 or More £	Code	Hire
Zero 88 Betapack 4, 15A	£899.00	£808.00	0011-000023-00	Yes
HTS Switch Pack	£475.00	£425.00	HTS15A	Yes
Alpha Pack 3, 15A	£449.00	£401.00	0011-000001-02	Yes

## Loudspeaker's

### EV - EVOLVE50 Portable line array PA system.

This truly amazing professional sub and speaker system with built in blue tooth and microphone inputs, perfect for education, mobile entertainers, bands, singer/song writers and any venue where high output portable sound is required.

Portable column system, consists of 1 Subwoofer, 1 Column Array, 1 sub pole incl. carrying bag for array+pole

Available in black or white.



Description	RRP	2 or More £	Code	Hire
EVOLVE50-KB Black	£1,583.00 each	£1,270.25 each	EVOLVE50-KB	Yes
EVOLVE50-KW white	£1,627.15 each	£1,303.75 each	EVOLVE50-KW	Yes
Subwoofer cover	£46.40 each	£39.50	SUBCVR	No



## Battery Speakers

### EV - EVERSE 8 Portable speaker system.

This truly amazing professional speaker system with built in 12 hour Li-ion Battery, perfect for education, mobile entertainers, bands, singer/song writers.

Weather Resistant



RRP £705.00



Lubell Labs the only underwater speaker choice for quality under water audio. Speak with the sales teams.

Complete package Guide prices £2,900.00

### UNDER-WATER SPEAKER SYSTEM



## Loudspeaker's

### EV - ZX Passive Loudspeaker Range

- Versatile performance formains, fills, or monitors
- DVX3150A woofer with forced-air cooling
- 2-inch ND2 titanium/neodymium HF driver
- Switchable bi-amp or passive crossover operation
- High impact polypropylene enclosure
- Wedge shape for monitors at 45° or 55°
- Up to five anchor-plate attachments
- Integrated handle



Available in black or white

Description	RRP	2 or More £	Code	Hire
ZX1- 90 Black	£337.31	£287.98	ZX1	Yes
ZX3- 90 Black	£827.00	£699.50	ZX3	Yes
ZX5-90 Black	£981.00	£834.45	ZX5	Yes

## Sound Desks

### Allen & Heath QU Series

A feature-packed new Chrome Edition, Qu series reshapes digital mixing, combining innovative design and exceptional functionality to create a superb professional mixing experience. Bristling with all the features you'd expect from a top of the range digital console and incorporating technologies pioneered on the GLD and iLive digital mixing systems, Qu- Series has the power and pedigree to deliver class-leading audio performance. Qu series features include multitrack recording direct to USB, Automatic Mic Mixing, ProFactory mic presets, plus an ever growing ecosystem of apps, accessories and remote I/O.

Description	RRP	2 or More £	Code	Hire
QU16	£ 1791.00	£ 1701.00	QU16	Yes
QU24	£ 2391.00	£ 2271.00	QU24	Yes
QU32	£ 2983.00	£ 2833.00	QU32	Yes



Model	RRP	2 or More £	Code	Hire
AB1608 Stage box	£991.00	£941.00	AB168	YES
Carry bag	£83.00	£78.85	AP9932	No



Description	RRP	2 or More £	Code	Hire
2m CAT5E	£ 53.89	£ 51.19	AH9997	Yes
20m CAT5E Flex	£ 158.00	£ 150.63	AH9651	Yes
50m CAT5E on drum	£ 515.95	£490.15	AH9981	Yes



# Microphones

## Shure - SM58

It's an ideal choice for a professional vocal artist in any live performance setting. It is tuned to accentuate the warmth and clarity of lead and backing vocals.



## Shure - SM57

The most popular choice for a professional musician who wants to mic up their amplified or acoustic instrument.



Description	RRP	2 or More £	Code	Hire
SM58	£99.00	£97.00	SM58	Yes
SM57	£99.00	£97.00	SM57	Yes
JTS TX7 Budget Mic	£37.50	£29.00	TX7	No

## CHOIR MICROPHONE

**JTS FGM-170 CARBON.** The very light carbon boom makes remote mic'ing an easy job, supplied with cardioid, omni-directional & supercardioid capsules. Applications, Choirs and presentation, supplied with 8m XLR Cable

Description	RRP	2 or More £	Code	Hire
FGM-170	£216.74	£195.00	FGM-170	Yes
Wireless accessory kit *	£15.41	£13.87	FGM-GM	Yes

\*Wireless kit to be used US 903DC Lapel system on page 53



## Radio Microphones

With advanced wireless technology, JTS wireless microphone systems outperform many other wireless systems in and above their price range. PLL technology provides great freedom from RF interference, and outstanding signal reliability allows a maximized numbers of systems working simultaneously.

Description	RRP	2 or More £	Code	Hire
Duel system receiver	£535.55	£499.99	RU-901G3Du	
Hand held Mic for above	£180.80	£162.00	RU-G3 TH	Yes
Lapel belt pack system	£180.80	£162.00	RU-G3 TB+CM-501	Yes
Flesh tone head worn microphone	£112.50	£71.10	CX-500FHW MA-500	Yes

Description	RRP	2 or More £	Code	Hire
Single pouch waist strap small, medium and large beige.	£29.99	£28.99	URSA Straps	No
Single pouch waist strap small, medium and large Black.	£29.99	£28.99	URSA Straps	No



Sizing	Fits
Small	24-32—Inch Waist
Medium	24-32—Inch Waist
Large	24-32—Inch Waist



For licensing information please visit [www.jfmg.co.uk](http://www.jfmg.co.uk) or Tel 02072998660  
Sennheiser, AKG, and Audio Technica all available POA .