

UniTrack

for draperies and scenery

UniTrack is our original track. It's a welded steel construction, black powder coated, designed for smooth operation, high weight capacity and modular flexibility.

The perfect track system to take on tour or keep in stock for rep.



Technical Details

External dimensions are 51 mm (2 1/64") wide x 100 mm (3 15/16") High

Standard finish for all track and components is matt black, custom RAL finishes to order.

Available in 250 mm, 500 mm, 1,000 mm and 2,000 mm stock lengths and customs to order.

WLL of 25 kg per runner

WLL of 400 kg UDL on 1 m centre suspension points

Stock 90 degree curves of 1,000 mm, 1,500 mm, 2,000 mm and 3,000 mm radius and custom radius and degree curves to order

Our unique system of four spigots and a single bolt give unrivalled fast installation and derig times on stage

The UniTrack system is universally recognised as the market leader for stage tracks. It is robust, versatile, and very reliable in fulfilling many roles and purposes.

UniTrack is a fabricated steel 'I' beam creating solid running surfaces and a mounting platform for a variety of accessories to fulfil movement tasks with draperies and scenery elements.

With the range of stock straight and curved sizes almost any layout from single and overlapped straight systems to curved and reversed curve configurations.

These can be motorised, walk along or corded as required.

With 17 standard cording methods the UniTrack system gives the end user the flexibility of use to cover almost any requirement including scenery movements, multiple independent drapes and scenic elements, rear fold, and all common drape movements.

All runners and pulleys as standard use sealed, greased ball-raced bearings to give the smoothest, quietest operation possible.

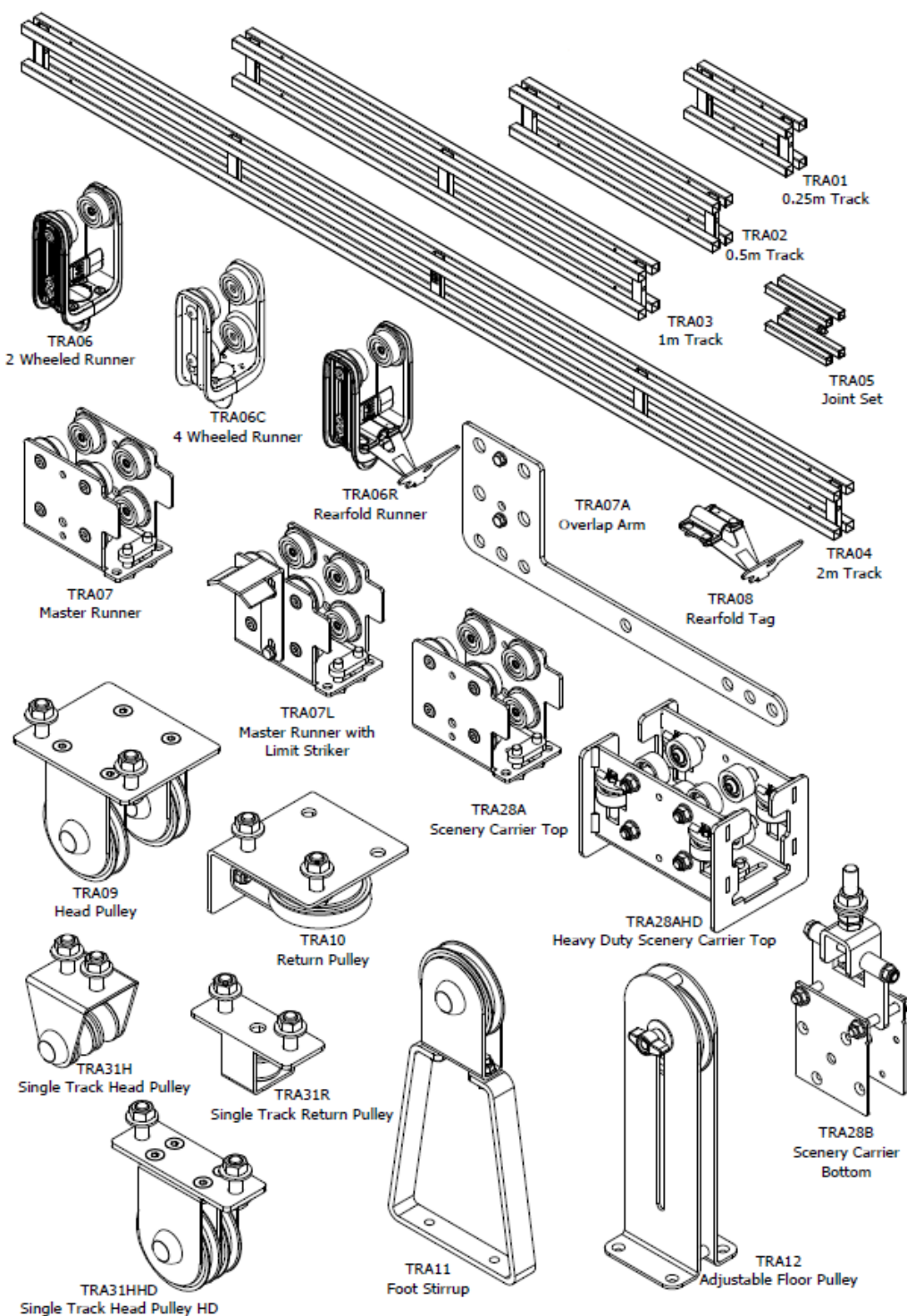
The versatile beam design allows for the track to be used in any orientation with the slot allowing for a variety of suspension fittings including hook clamps, studding and girder clamps to be used anywhere along it's length.

Motorised operation can be achieved with a plug and play TDrive or TDrive HD motor which swiftly and securely mounts to the track, wall or floor as required.

As the quickest main house track to install on the market, UniTrack continues to be used for permanent stages and forms the basis of hire stocks around the world for theatre, TV/Film and the wider entertainment industry.

The is the track for touring or where future flexibility of size or function is required.

UniTrack Components



Triple E Ltd

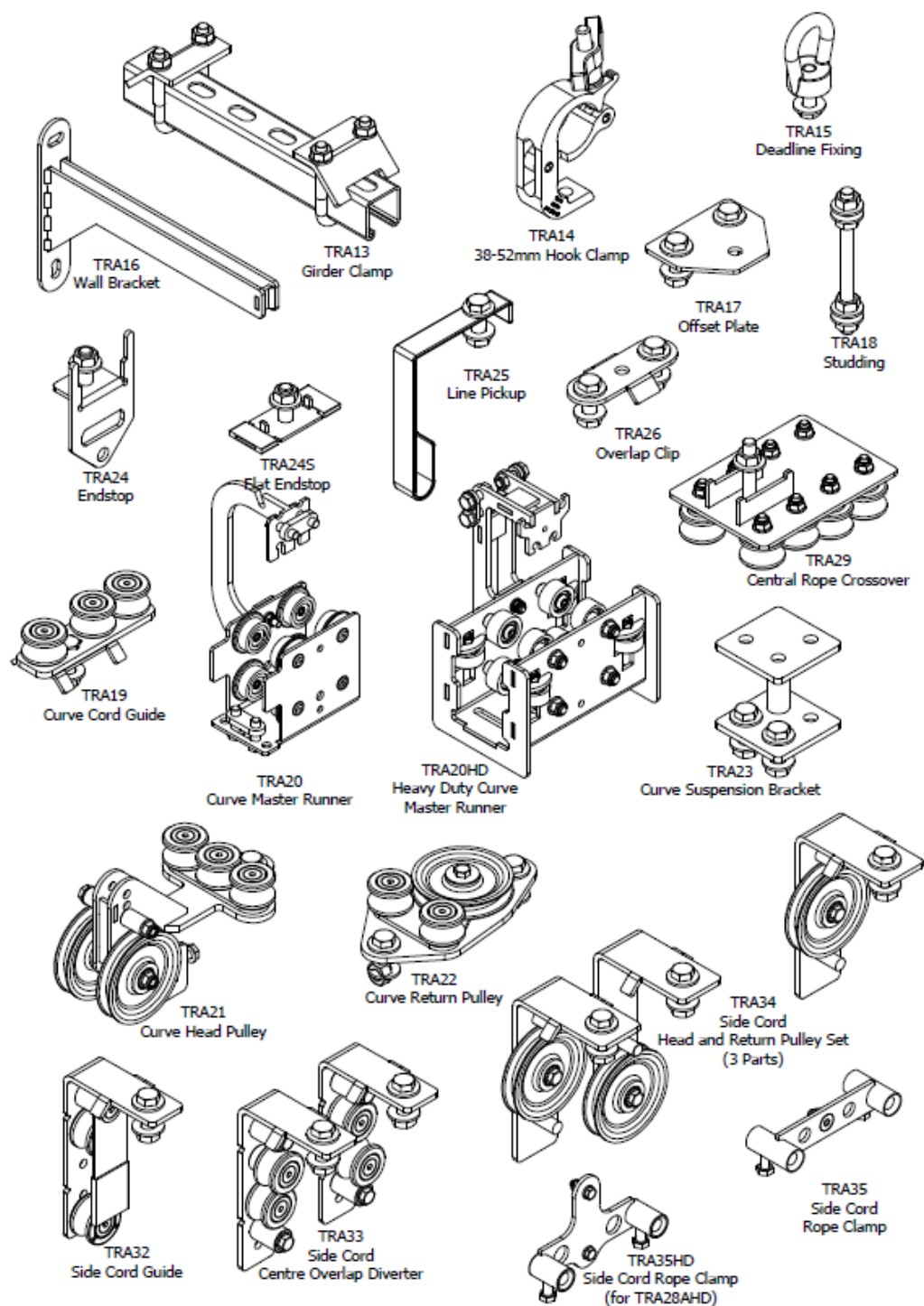


Telephone: +44 (0) 1959 570 333

Email: info@triplee.ltd

Visit: www.triplee.ltd

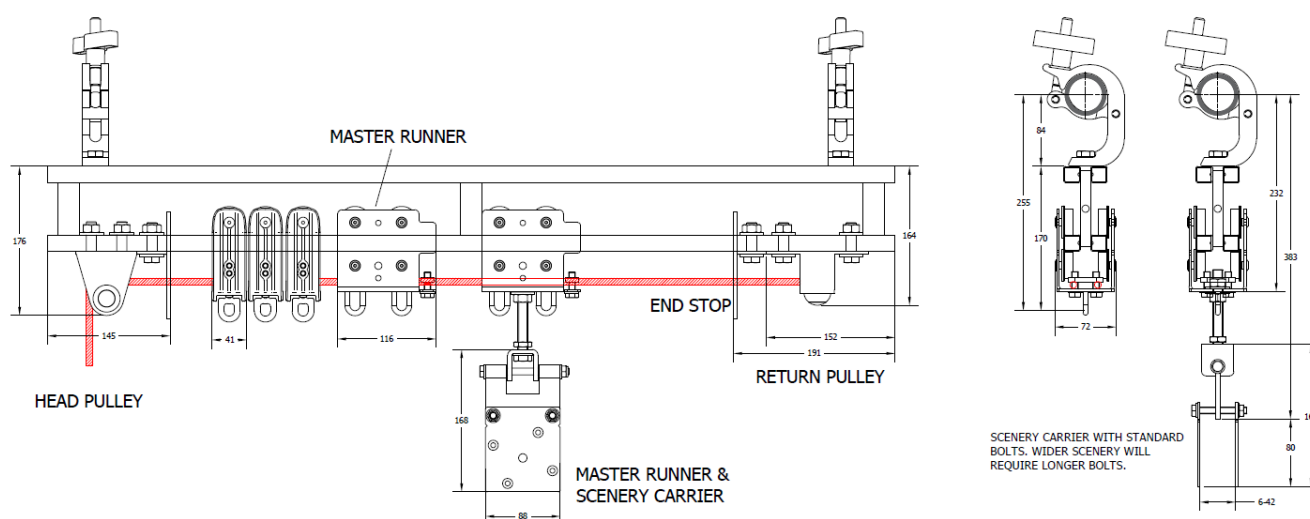
UniTrack Components



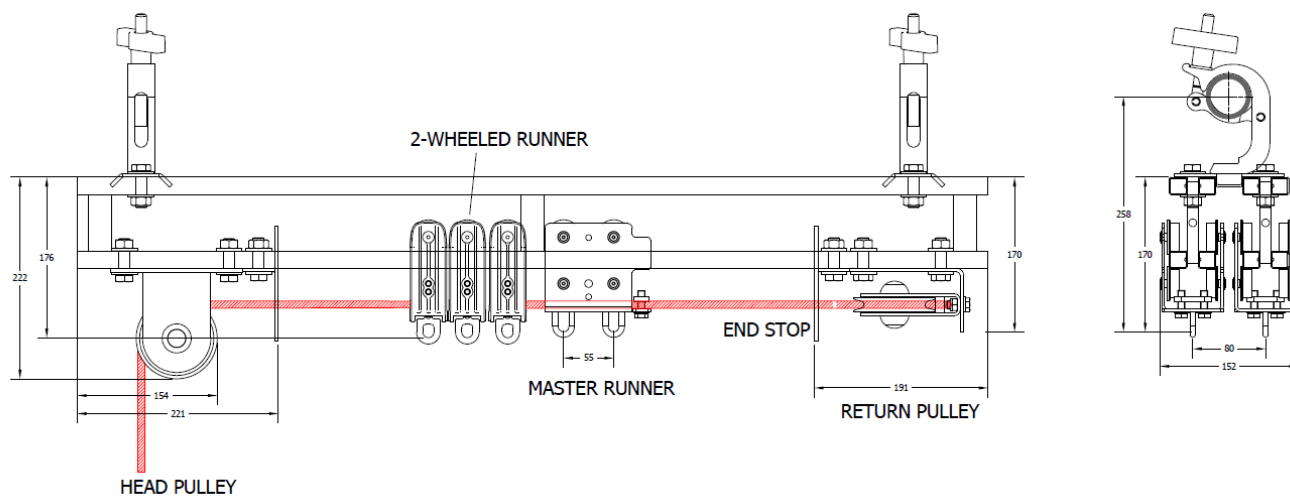
UniTrack

General dimensions

SINGLE UNITRACK PRINCIPAL DIMENSIONS:



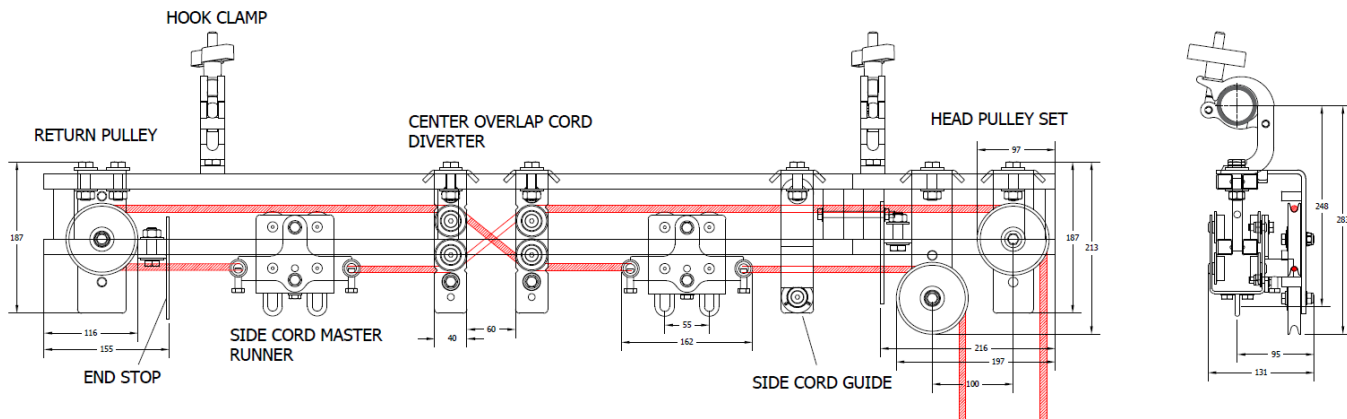
CENTER OVERLAP UNITRACK PRINCIPAL DIMENSIONS:



UniTrack

General dimensions

UNITRACK SIDE CORD PRINCIPAL DIMENSIONS:



UNITRACK CURVED TRACK PRINCIPAL DIMENSIONS:

